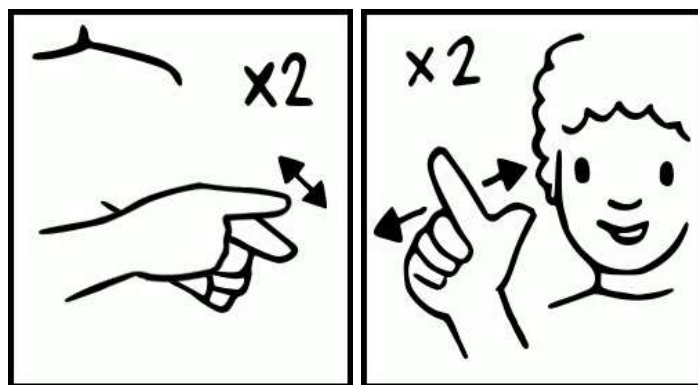


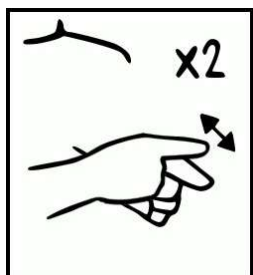
# *Auslan*

## **FOR THE ENGLISH TEACHER**

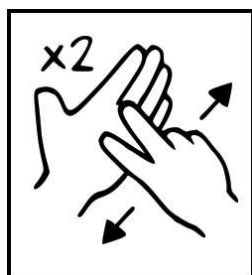


ENGLISH TEACHER

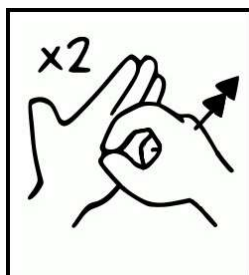
# SPECIFIC SIGNS FOR THE ENGLISH TEACHER



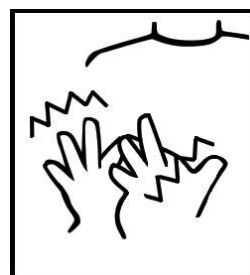
ENGLISH



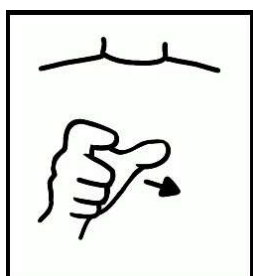
READ



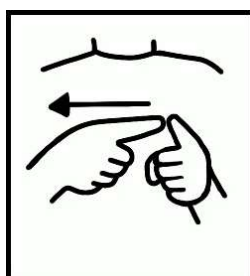
WRITE



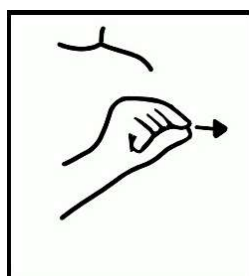
SPELL



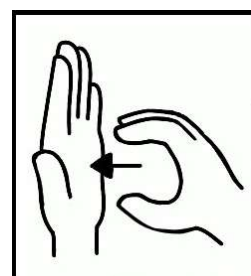
WORD



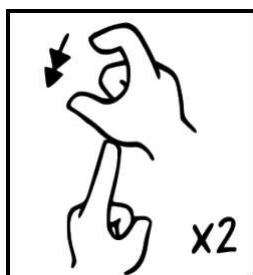
SENTENCE



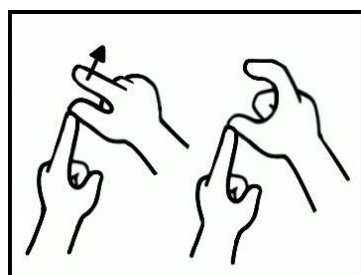
FULL STOP



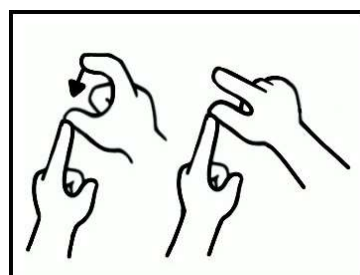
PARAGRAPH



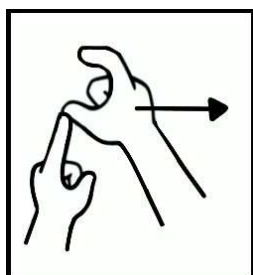
CAPITAL LETTERS



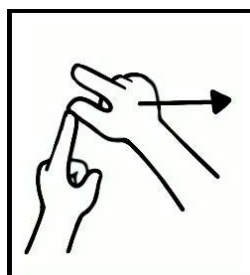
UPPER CASE



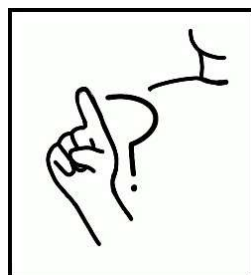
LOWER CASE



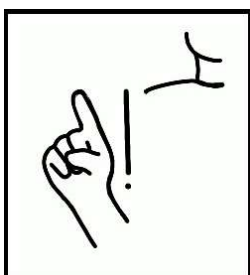
ALL IN UPPER CASE



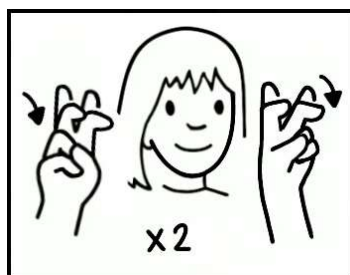
ALL IN LOWER CASE



QUESTION MARK

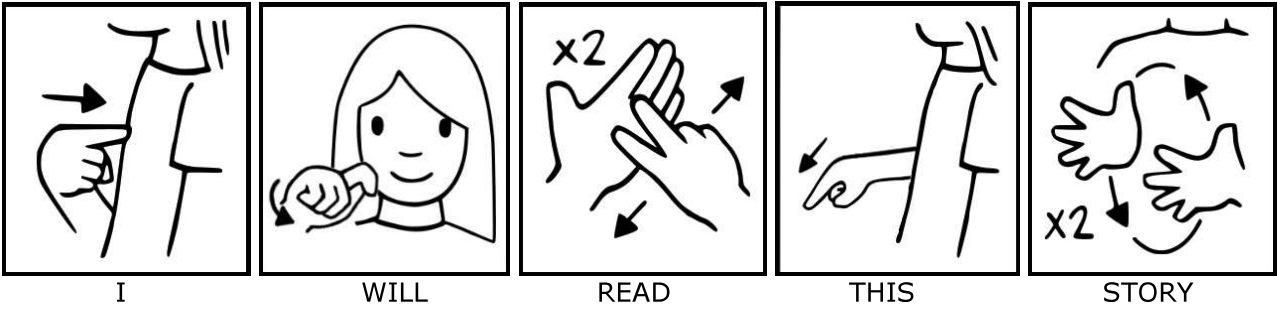


EXCLAMATION MARK

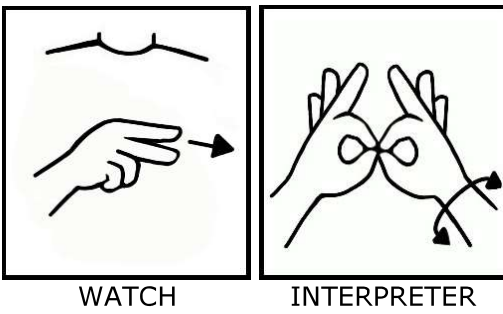


QUOTATION MARKS

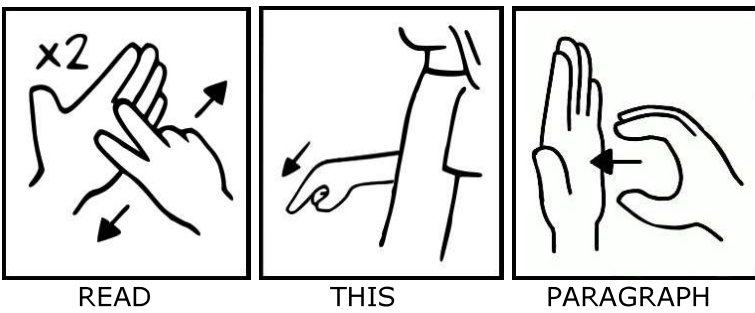
I will read this story



Watch the interpreter



Read this paragraph



Who is the book's author?

